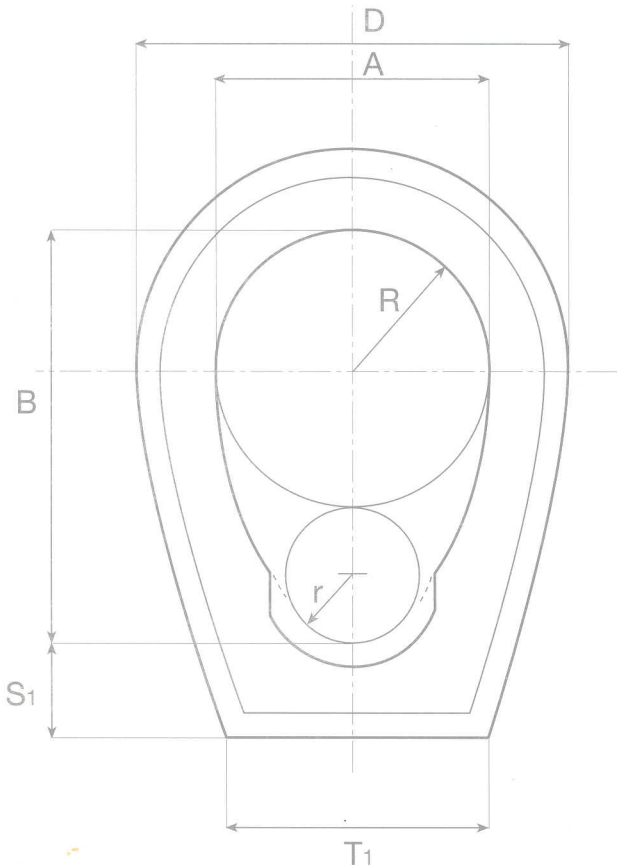


## TUBI OVOIDALI



| A    | 30   | 40   | 50   | 60   | 70   | 80   | 90   | 100  |
|------|------|------|------|------|------|------|------|------|
| B    | 45   | 60   | 75   | 90   | 105  | 120  | 135  | 150  |
| R    | 150  | 200  | 250  | 300  | 350  | 400  | 650  | 500  |
| S    | 75   | 100  | 125  | 150  | 175  | 200  | 225  | 250  |
| D    | 490  | 630  | 750  | 900  | 1000 | 1100 | 1200 | 1350 |
| S1   | 105  | 125  | 145  | 150  | 150  | 185  | 195  | 205  |
| S2   | 55   | 65   | 70   | 85   | 85   | 85   | 90   | 95   |
| T1   | 310  | 386  | 452  | 510  | 560  | 630  | 650  | 720  |
| C    | 70   | 70   | 80   | 80   | 80   | 80   | 80   | 80   |
| L    | 2000 | 2000 | 2000 | 2000 | 2000 | 2000 | 2000 | 1500 |
| PESO | 550  | 800  | 1100 | 1300 | 1670 | 1970 | 2200 | 2000 |

